



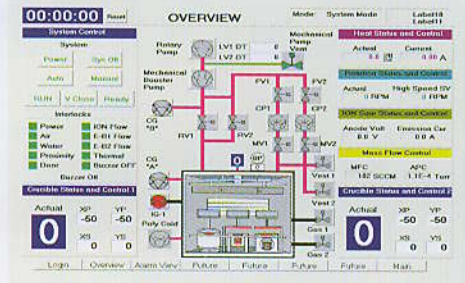
mars 75 thin-film coater

High-vacuum evaporation system ($\phi=750$, $h=950$ mm) for optical applications

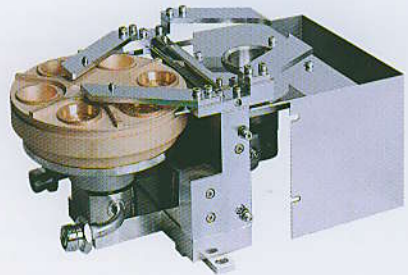


mars 75 thi

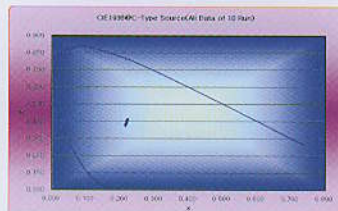
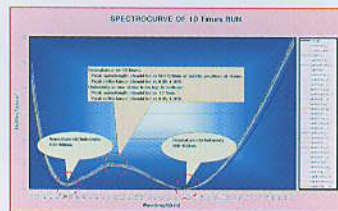
Control systems are designed to give you the flexibility you need for the process requirements. It is easy for the operator to use them. It is also simple for your technician to supervise the production management.



Evaporation sources, such as the electron beam evaporation sources on the right are designed for rough production circumstances. Quick change of filaments without disconnecting high voltage lines is an example to keep your evaporation tool productive for 24 hours a day.



AR coatings is the way you desire. If it is a typical anti reflex or special broadband design, the Mars 75 will produce high quality reproducible coatings with liability.



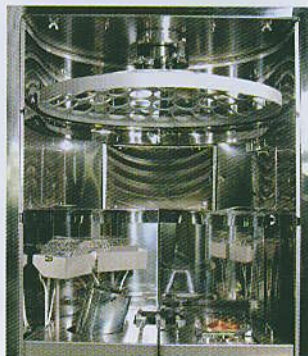
The Specification...

• Description	Optical Coating Chamber
• Type	Front Load Box Coater
• Chamber Diameter	∅ 750 × 950H
• Lens Capacity	67pcs/70mm Lens(Single Dome)
• Model	<i>mars 75</i> Series

Combinable components

General

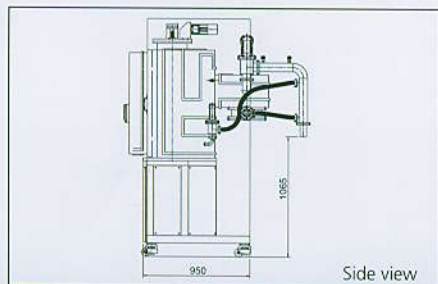
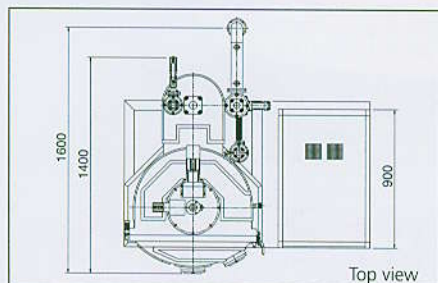
- Rotary pump : 96m3h-1 1set
- Diffusion pump with baffle : 18" 1set
- Valves
 - Main valve : 18" 1set
 - Roughing valve : 4" 1set
 - Fore line valve : 4" 1set
 - Vent valve : 1" 1set
- Halogen lamp : 0 to 350°C max
- Substrate rotation : 0 to 35 rpm
(soft start, soft stop)
- Vacuum gauge : display & control
- Thermal evaporation source



Optional

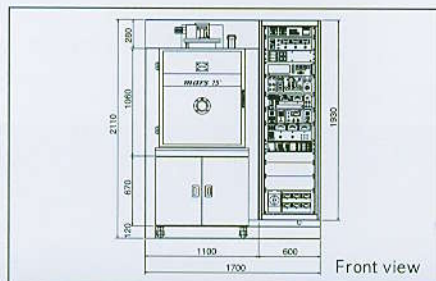
- Mechanical booster pump
- Thin film deposition controller
- Optical monitor & controller
- Ion beam source
- Electron beam source
- Turbo molecular pump
- Chiller
- Touch screen control system
- Others

Dimension



User Utility

- Power consumption : ∅ 3x400V ± 5% 50/60Hz 15/20kW
- Compressed air supply pressure : 5~8kgf/cm²
- Cooling water supply
 - Pressure : 3~4kgf/cm²
 - Temperature : 18 to 25°C
- Oil drain line



European agent



Lootsma Vacuum Solutions Dammweg 6
8881 Tscherlach Switzerland
Tel. +41 (0)81 710 26 25
Email: lvs@bluewin.ch

Service partner



Vacotech AG Fohrenweg 18
9496 Balzers Liechtenstein
Tel. +423 380 03 41
Email. vacotech@adon.li

Manufactured by



INTEC Inc.
Vacuum Equipment System & Power Source
KOREA
Bucheon Techno Park, 304-308
365 Samjeong-Dong, Ojeong-Gu,
Gyeonggi-Do, Korea
Tel : +82-32-234-1991 / Fax : +82-32-234-1995
E-mail : info@intecinc.co.kr

China Office

#2/F, No.2 Qilai B/D(west), No 889, Yishan Road,
Shanghai, CHINA 200233
Tel : +86-21-6441-2710 / Fax : +86-21-6441-2712

Europe

Lootsma Vacuum Solutions Dammweg 6, 8881
Tscherlach, Switzerland
Tel : +41-78-898-8218 / Fax : +41-81-710-2625
lvs@bluewin.ch www.high-vacuum-service.com

Japan Office

Yutakacorporase 301, Okubo 2-18-17, Shinjuku-ku,
Tokyo 169-0072, JAPAN
Tel : +81-3-5476-3278 / Fax : +81-3-3451-6925

E-mail : info@intecinc.co.kr

Singapore Office

623 Aljunied Road #02-09 Aljunied Industrial
complex Singapore 389835
Tel : +65-6842-3790 / Fax : +65-6842-6291

India Office

303 Ashwamegh Avenue Mithakhali, Naveragpura
Ahmedabad 380 009,INDIA
Tel : +91-79-640-2465 / Fax : +91-79-6421-1585

Taiwan Office

No.122 Chung-Hua Rd, Hsinchu Industrial park,
Hu-Kou(303)Hsinchu Conuty,Taiwan
Tel : +886-3597-2869 / Fax : +886-3597-2870

E-mail : chyoun@intecinc.co.kr